

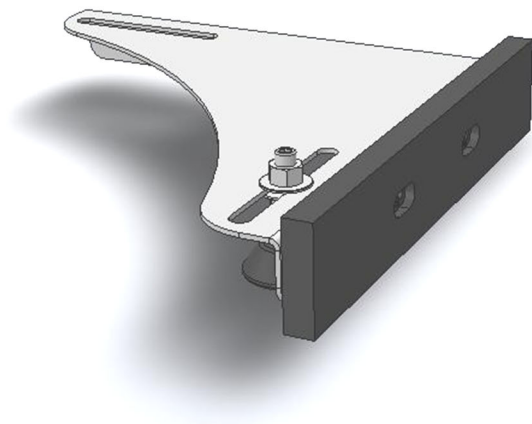


Original Saw Company
465 Third Ave SE
Britt, IA 50423 USA

PH 641-843-3868
800-733-4063
customerservice@originalsaw.com
www.originalsaw.com

Gang Stop Assembly

Parts Breakdown

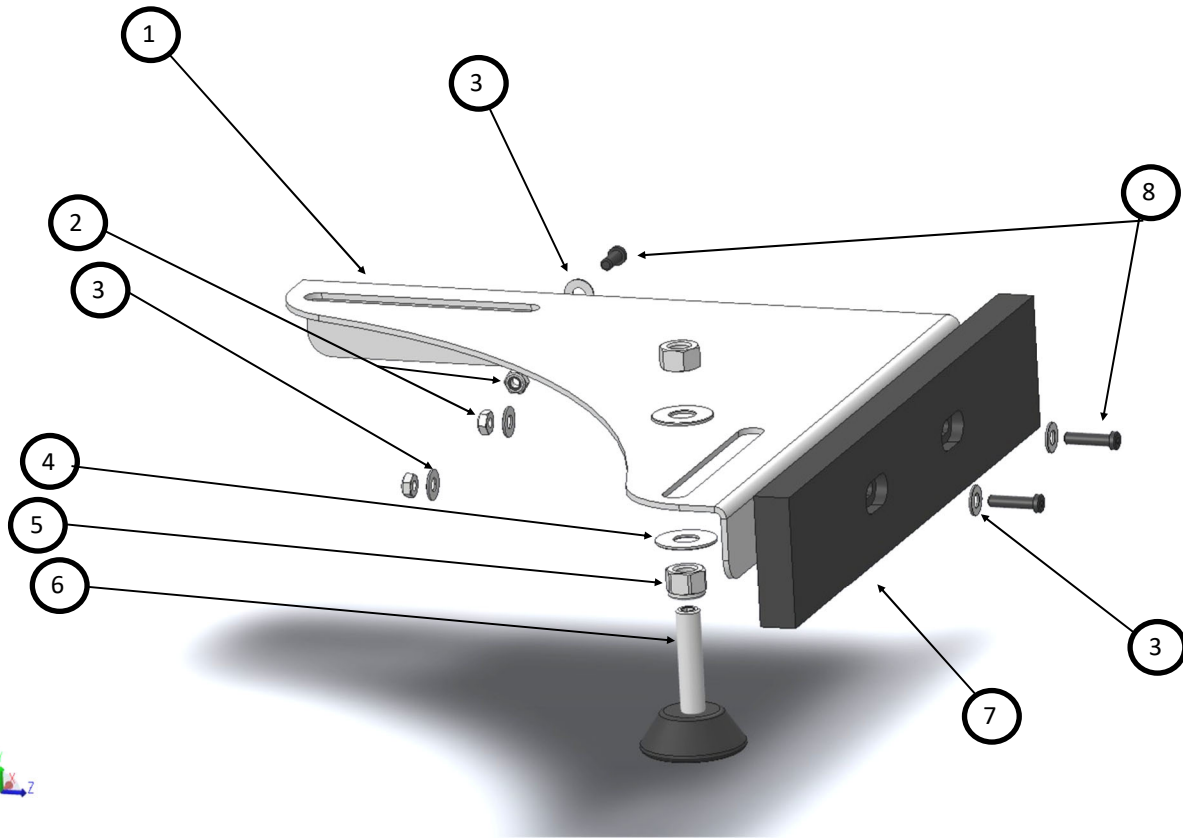


Gang Stop Accessory

900744-14

Made in USA

Gang Stop Assembly p/n 900744-14



Index #	part #	description	qty
1	900722-16	Gang Stop, Bracket, Formed	1
2	099374-05	1/4" hex jam nut	4
3	046084-00	1/4" flat washer	6
4	099361-18	5/16" flat fender washer	2
5	099364-04	5/16 hex jam nut	2
6	900722-18	glide foot and stud	1
7	900722-12	HDPE stop foot	1
	900722-14	HDPE stop foot (extended version)	
8	099154-22	1/4-20 x 1 3/8 SHCS	4
Parts now shown			
	084173	1/4" lockwasher	4

Gang Stop Assembly p/n 900744-14

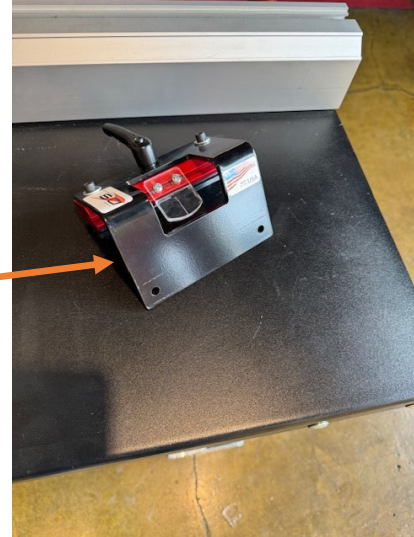


Installation & assembly

Your new gang stop assembly will install on a 900721-06 Fixed foot slider assembly. This will allow your measuring system to cut multiple parts at a time accurately. To install please follow the following steps:



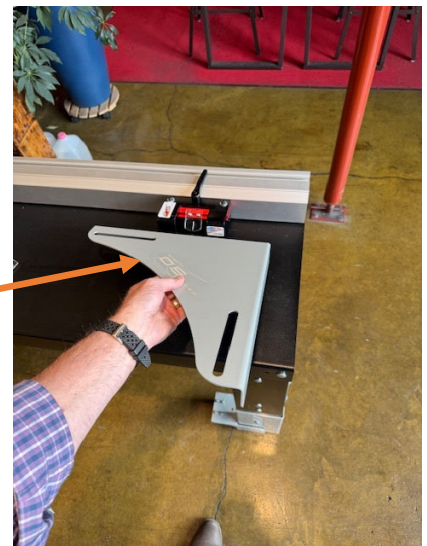
Remove the aluminum foot from your fixed foot slider assembly. Once removed your system should look like the photo at the right



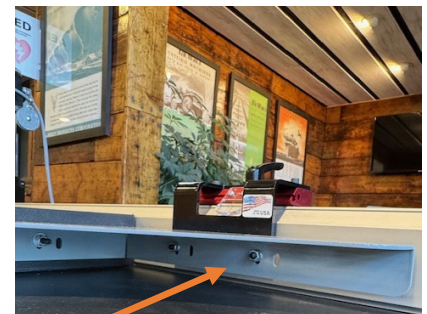
Rotate gang stop bracket depending on which way the stop will be mounted.

This way for right side

This way for left side



Attach the HDPE foot on the front side of the bracket using these holes and running the socket head cap screws in from the front side as shown with the hex nuts on the inside. Note use the further outside holes. Using these holes will allow adjustment on the front side in the next step.

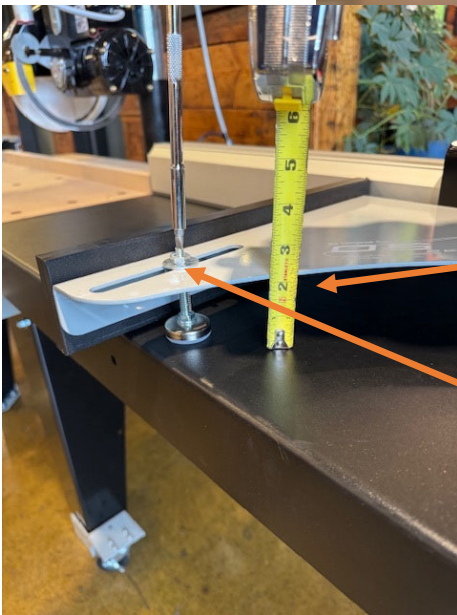
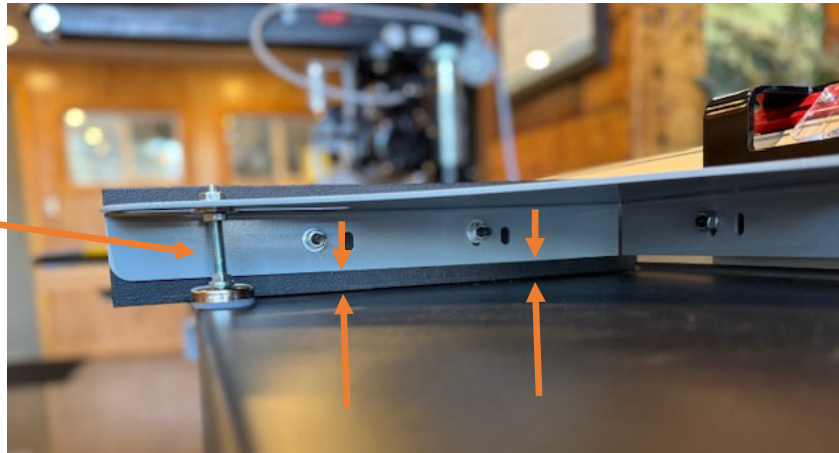


Attach the bracket to the slider using these holes and running the socket head cap screws in from the back side as shown with the hex nuts on the inside.

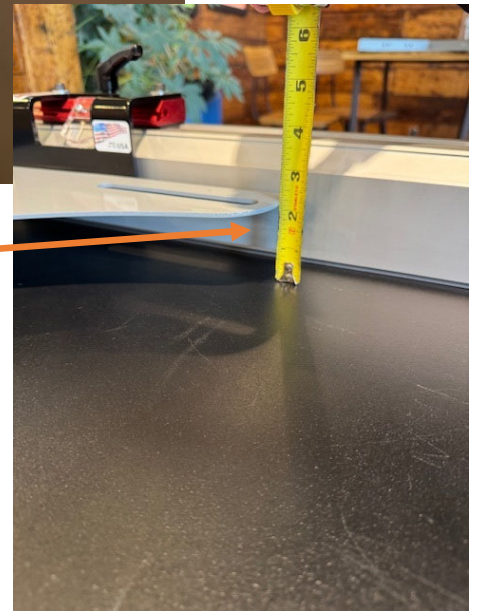
Gang Stop Assembly p/n 900744-14



Set the bracket clearance with the extension table top using the glide foot and stud as shown below.



Using a tape measure height off the table at the fence and match that height out on the end using the foot and a screwdriver. Once level lock the stud using the jam nut.



Adjust the HDPE foot so it just glides over the table top or just above and the mounting screws and the slotted holes in the bracket itself.

Also adjust the plastic foot, using the horizontal slotted holes, so it almost glides against the aluminum back rail.

